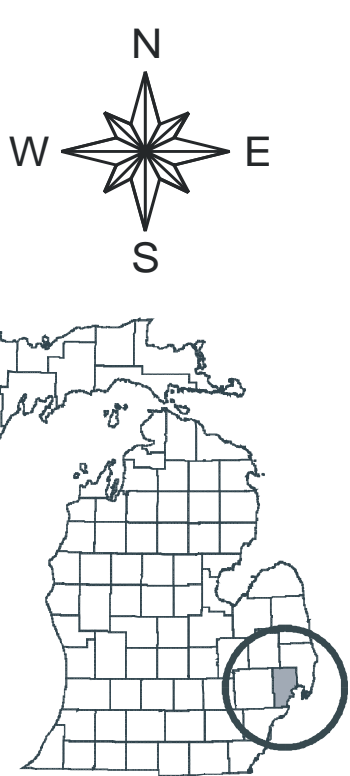


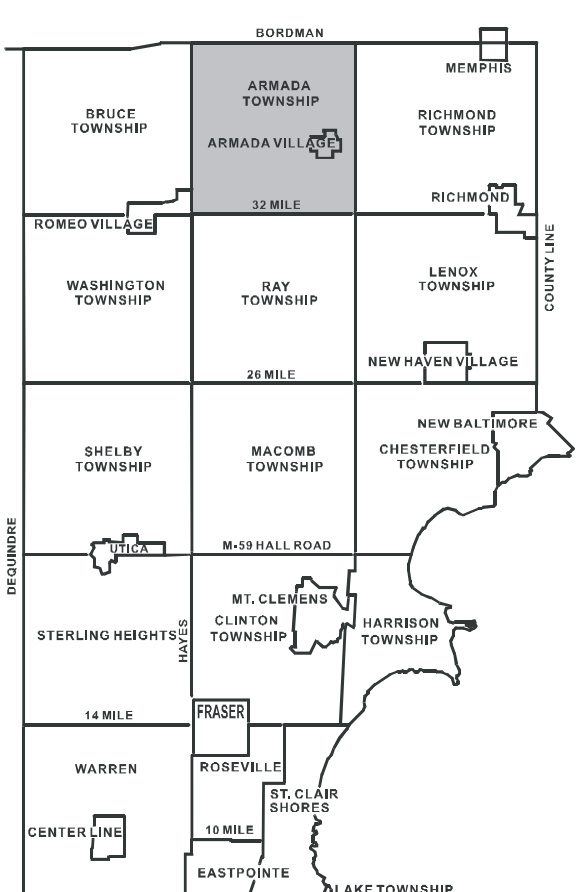
200

100 50 0 100 200 Feet

1:1,200



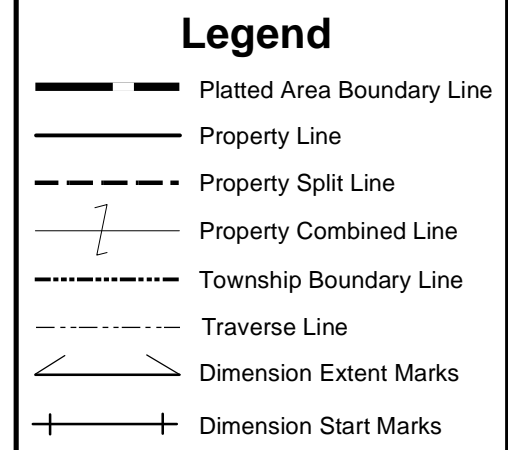
ARMADA TOWNSHIP SHEET INDEX



1902-20	1903-20	1904-20	1905-20	1906-20	1907-20	1908-20	1909-20	1910-20	1911-20	1912-20	1913-20	1914-20	1915-20	1916-20	1917-20	1918-20	1919-20	1920-20	
1921-20	1922-20	1923-20	1924-20	1925-20	1926-20	1927-20	1928-20	1929-20	1930-20	1931-20	1932-20	1933-20	1934-20	1935-20	1936-20	1937-20	1938-20	1939-20	1940-20
1941-20	1942-20	1943-20	1944-20	1945-20	1946-20	1947-20	1948-20	1949-20	1950-20	1951-20	1952-20	1953-20	1954-20	1955-20	1956-20	1957-20	1958-20	1959-20	1960-20
1961-20	1962-20	1963-20	1964-20	1965-20	1966-20	1967-20	1968-20	1969-20	1970-20	1971-20	1972-20	1973-20	1974-20	1975-20	1976-20	1977-20	1978-20	1979-20	1980-20
1981-20	1982-20	1983-20	1984-20	1985-20	1986-20	1987-20	1988-20	1989-20	1990-20	1991-20	1992-20	1993-20	1994-20	1995-20	1996-20	1997-20	1998-20	1999-20	2000-20

DESCRIPTION OF PERMANENT REAL ESTATE INDEX NUMBER

13 - 19 - 302 - 018



02-03C

Previously part of 02-D  
ARMADA TWP.  
W. 1/2 N.E. 1/4 SEC. 3 T. 5N. R. 13E.

Source: Macomb County Department of Planning and Economic Development - 2008 Digital Orthophotography Project - Parcel Conversion Project  
Note: Digital Orthophotography horizontal positioning accuracy is 3 feet. Parcel boundary lines should be considered a graphical representation and not in any way a legal survey or engineering document. In general, the horizontal positioning and length accuracy is within 15 feet.  
This map is intended for general planning purposes. Site specific evaluation should be verified by field inspection. This is a work in progress and may contain errors and omissions. Please report any potential revisions to (586)469-5285.