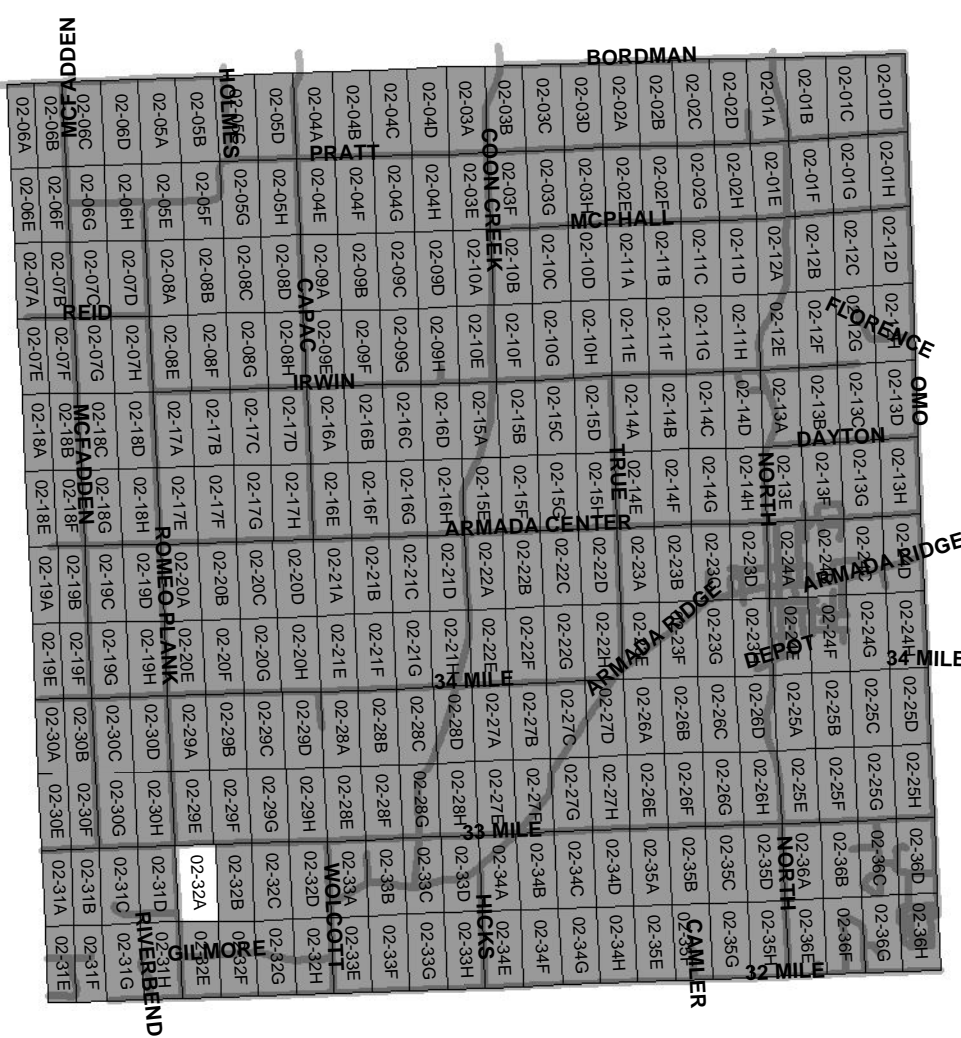
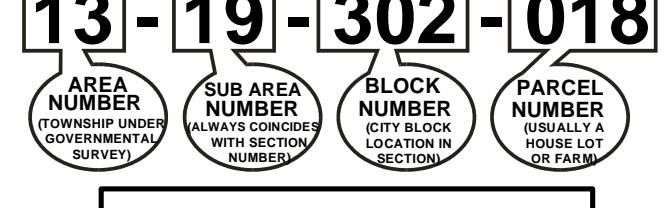




ARMADA TOWNSHIP SHEET INDEX

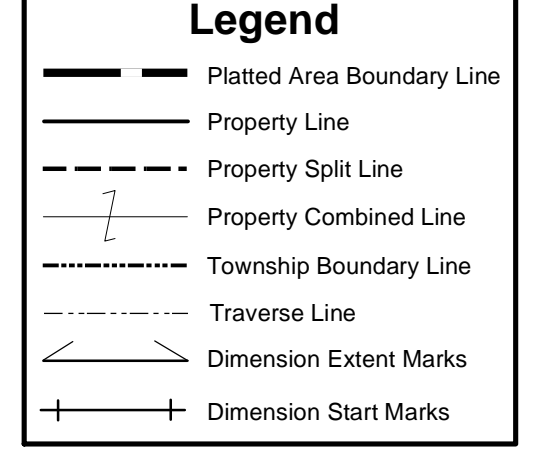


DESCRIPTION OF PERMANENT REAL ESTATE INDEX NUMBER



02-32A

Previously part of 02-0 ARMADA TWP. W. 1/2 N.W. 1/4 SEC. 32 T. 5N. R. 13E.



Source: Macomb County Department of Planning and Economic Development - 2008 Digital Orthophotography Project - Parcel Conversion Project

Note: Digital Orthophotography horizontal positioning accuracy is 3 feet. Parcel boundary lines should be considered a graphical representation and not in any way a legal survey or engineering document. In general, the horizontal positioning and length accuracy is within 15 feet.

This map is intended for general planning purposes. Site specific evaluation should be verified by field inspection. This is a work in progress and may contain errors and omissions. Please report any potential revisions to (586)469-5285.



GIS MACOMB COUNTY Planning and Economic Development Department